

# Compton General Plan Community Survey Summary

## Introduction

The City of Compton is updating their General Plan. Community engagement is a critical part of these updates, and the community survey was an important tool. The community survey entitled “Vision for Compton Survey: Share Your Ideas” launched online in October 2022. The survey was divided into six sections:

1. Visioning: Ideas for Future Success
2. Community Safety
3. Housing
4. Businesses
5. Community Health and Environment
6. Engagement in Civic Decision-making

## Survey Background and Methodology

The survey was designed in English and translated to Spanish to gather community feedback and inform the priorities of the General Plan Elements, specific to safety, housing, economic development, and healthy and environment (environmental justice). To spread the word and encourage the community to participate, the survey was promoted at the Spring Fest event, focus groups, and other events and city mailers. Paper copies of the survey were made available at the key facilities and at several pop-up events and flyers with a QR code to access the survey online were shared with attendees.

The survey was made available on October 1, 2022, and closed on March 1, 2023. The survey tool used can be found in Appendix A.

Three hundred and eighty-two (382) total responses were gathered using the online survey platform. The results of the questionnaire are from a self-selecting, and non-random sample. These results are reflective of the opinions of those who filled out the questionnaire, and were used to identify priorities, challenges, and concerns. The responses allow for insight into the experiences of people living in Compton who expressed their interest by participating. Throughout the results presented, percentages are based on the number of respondents (382), rather than the sum of options checked.

## Key Survey Themes

The following main themes arose from the survey.

### What Key Issues the City should Address?

The survey results highlight a range of community priorities, including the provision of essential services, maintenance and enhancement of Compton Creek, reducing crime and enhancing public safety. Respondents also emphasized the importance of addressing issues such as street takeovers and unsafe intersections, tackling illegal dumping, trash, weeds, and other code violations, as well as improving aging public buildings and facilities. Additionally, there was a strong desire to enhance existing parks, maintain play equipment, and expand recreation and community programs, reflecting a focus on community well-being. Lastly, addressing loitering in public places and outside businesses emerged as a key concern to improve the overall quality of life in the surveyed area.

### What are the Key Community Values?

The survey responses highlight a set of key priorities for the community, which include a strong emphasis on creating an accessible and transparent government that actively listens to the community's concerns and needs. Respondents also expressed the desire for diverse employment opportunities and higher-paying jobs, underscoring the importance of economic well-being. Additionally, there is a clear focus on addressing climate change and enhancing community resilience, reflecting environmental concerns. Access to safe open spaces, parks, and trails is deemed important for quality of life. Lastly, respondents emphasized the importance of ensuring an equitable and just distribution of city services and improvements to foster inclusivity and fairness within the community.

### What are your Primary Personal Safety Concerns?

The survey findings point to several pressing concerns within the community. Property crime and gang violence are significant issues, indicating a need for improved safety and security. Code violations, including problems like abandoned cars, graffiti, weeds, and illegal dumping, are also a source of frustration for residents. Furthermore, the lack of accessible healthcare services is a pressing issue, highlighting the need for better healthcare access. Lastly, the survey underscores the economic challenges faced by some community members, with concerns about the inability to pay rent and the risk of homelessness, signaling a need for support in this area.

### What are Compton's Housing Preferences?

The survey results reflect a strong community interest in affordable housing solutions, with the majority of respondents expressing a desire for such options. The top priorities include affordable housing rentals, the conversion of motels into affordable housing, and the construction of duplexes, mixed-use developments, and accessory dwelling units (ADUs) in backyards. These findings indicate a need for diverse housing options, particularly those that address affordability. Additionally, respondents show an interest in housing along corridors to replace vacant commercial businesses or vacant lots, as well as townhomes and affordable housing for purchase, highlighting a comprehensive focus on improving housing accessibility in the community.

### What are More Employment Opportunities do you want to See in Compton?

The survey data reveals a range of preferences for land use in the community. Respondents are open to diverse options, including warehousing, e-

commerce, trucking, and logistics uses, indicating a desire for economic development and job opportunities. Additionally, there is a strong emphasis on promoting greener and cleaner industrial businesses to prioritize environmental sustainability. Professional office and management businesses are also favored, highlighting the need for a well-rounded job market. Moreover, the community expresses interest in the presence of educational institutions and programs, demonstrating a commitment to learning and knowledge-sharing. Lastly, arts and entertainment are valued, underlining the importance of cultural and recreational offerings in the area. These findings reflect a multifaceted approach to land use and community development.

### **How can the City Help the Community Attain Better Personal Health?**

The survey responses underscore a strong community focus on health and well-being. Residents are seeking support to implement daily exercise programs, emphasizing the importance of physical fitness. Access to mental health services is another vital concern, indicating a recognition of the significance of mental well-being. The desire for more physical activity and nutrition programs highlights a commitment to a healthier lifestyle. Additionally, respondents express the need for healthier restaurant choices and fewer fast-food establishments, emphasizing the importance of accessible and nutritious food options. Improved healthcare access is also a key priority, underlining the community's dedication to comprehensive healthcare services for all its members. These findings collectively illustrate a holistic approach to enhancing the overall health and quality of life within the community.

### **How can we Improve the Environment?**

The survey results emphasize a commitment to environmental sustainability and improved urban

living. Respondents highlight the importance of green initiatives, such as planting more street trees, establishing community gardens, and implementing urban greening projects, with a focus on enhancing the local environment. There's also a strong desire to minimize truck traffic and noise pollution, alongside the promotion of cleaner heavy-duty trucks to reduce the environmental impact of transportation. Additionally, the community is keen on water conservation, particularly during drought conditions, and supports the implementation of water-saving landscaping. Lastly, the survey reflects a push for clean and green business practices and operations, underscoring the importance of environmentally responsible economic activities within the community. These responses collectively underscore a dedication to sustainable and eco-friendly living.

### **How can we Expand Community Participation in Civic Discussions and Decision-Making?**

The survey responses highlight a strong community desire for enhanced communication and engagement strategies with the City. Residents express a need for information about City meetings and activities in languages other than English to promote inclusivity. They also emphasize the importance of accessible online information through the City's website, social media, or online project portal. Collaborating with community groups and religious institutions is seen as an effective way to inform and engage residents. Additionally, there's a call for more direct interaction between Councilmembers, their deputies, and constituents, such as open office hours. Lastly, residents express an interest in receiving more information through local newsletters and newspapers, underlining the significance of diverse communication channels to keep the community informed and engaged.

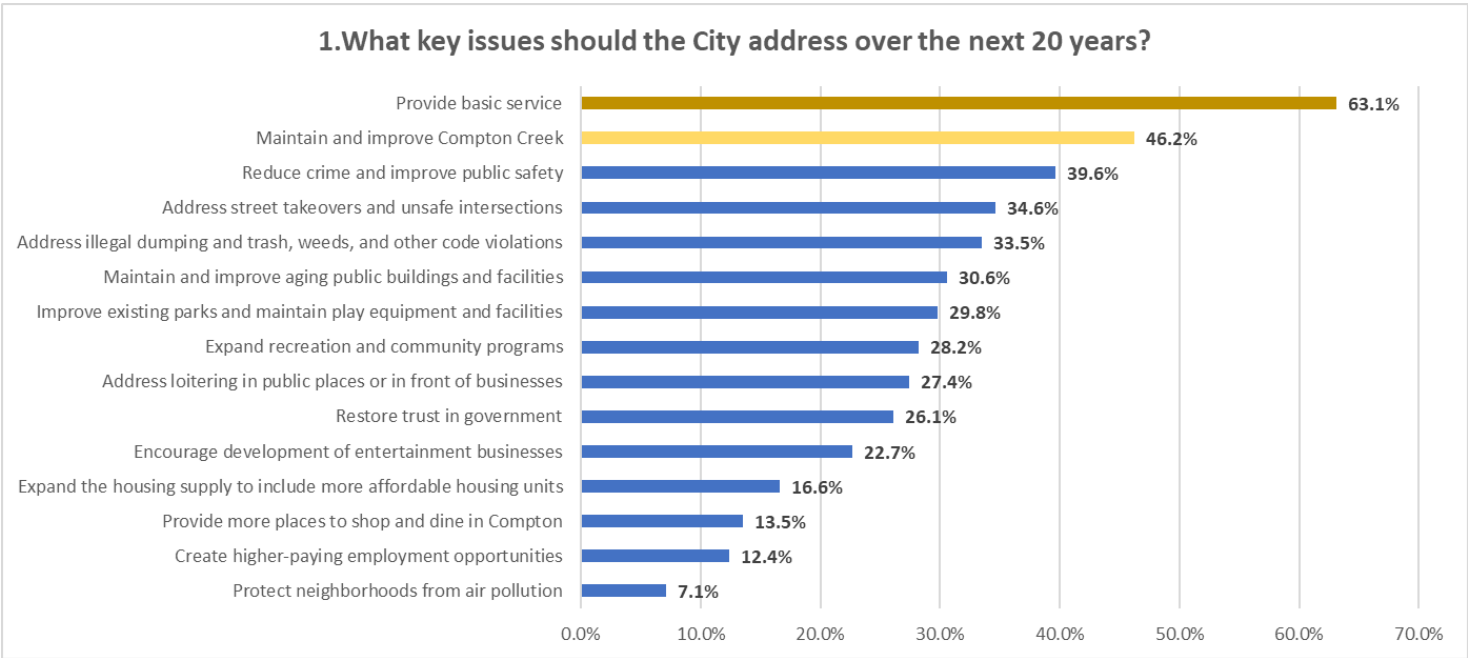
# Question Responses

Responses are organized below following the key questions. When viewing the results, note that some questions allowed participants to select three or more answer choices, resulting in total counts greater than the number of respondents and total percentages greater than 100%.

## Question 1: What key issues should the City address over the next 20 years?

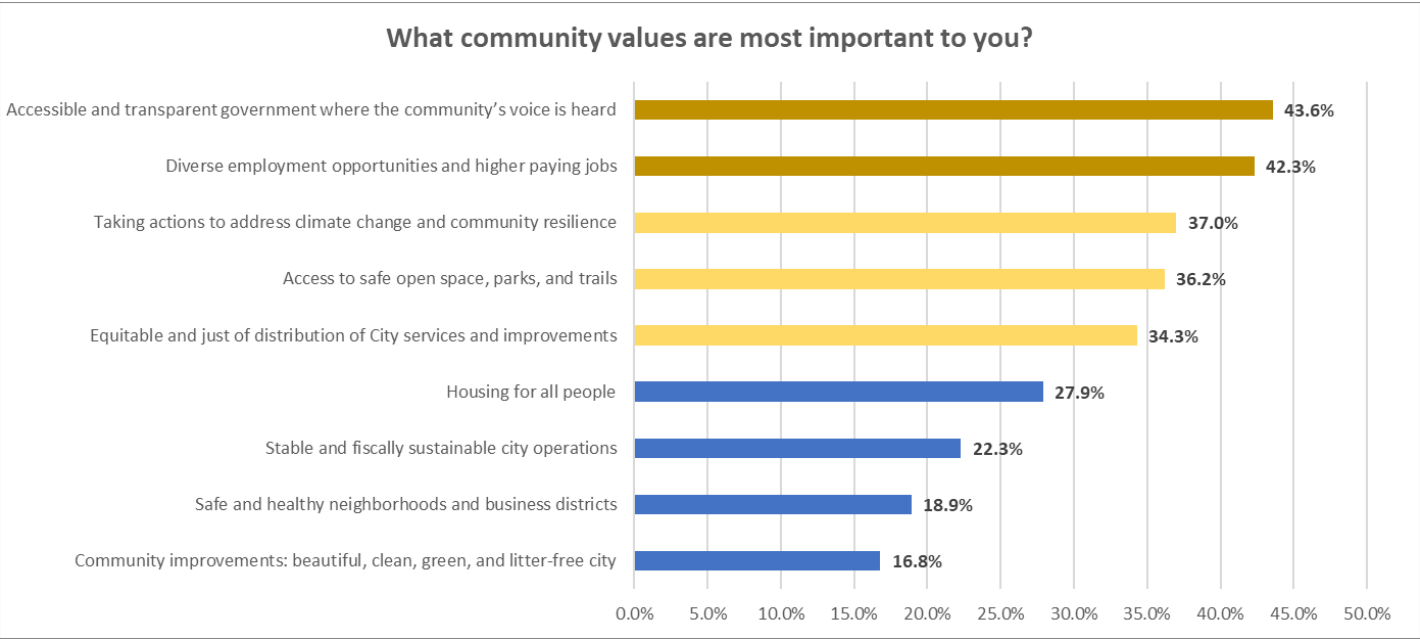
The survey results indicate that the top priority among respondents is providing basic services, with 63.1% of participants favoring this option. In the survey, basic services included fixing streets, cleaning up landscaping, fixing streetlights, and other similar services. Other significant concerns include maintaining and improving Compton Creek (46.2%), reducing crime and improving public safety (39.6%), and addressing street takeovers and unsafe intersections (34.6%).

Respondents also emphasize the importance of tackling issues like illegal dumping, trash, and code violations (33.5%), expanding recreation and community programs (28.2%), and maintaining and improving aging public buildings and facilities (30.6%). Some of the least prioritized areas include protecting neighborhoods from air pollution (7.1%), creating higher-paying employment opportunities (12.4%), and encouraging the development of entertainment businesses (22.7%).



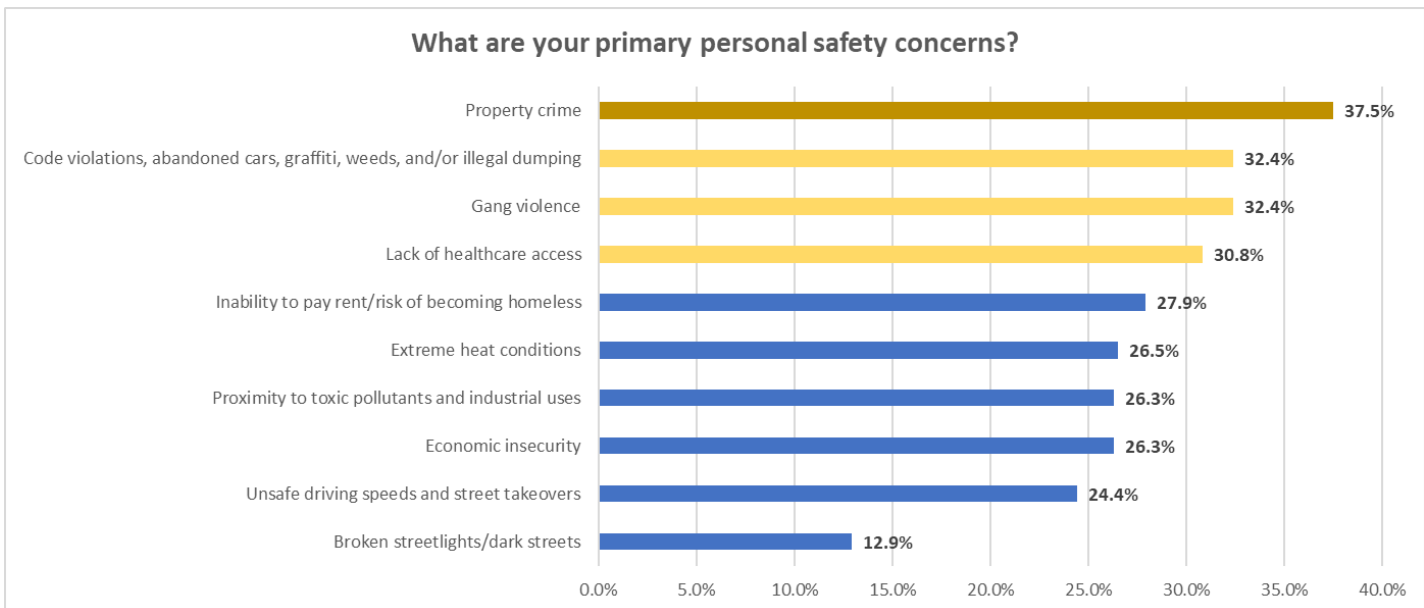
**Question 2: What community values are most important to you?**

The survey results reveal that the most prominent community values are accessible and transparent government where the community's voice is heard, with 43.6 of respondents prioritizing this aspect. Respondents also emphasize the importance of diverse employment opportunities and higher paying jobs (42.3%), taking actions to address climate change and community resilience (37.0%), and equitable and just distribution of City services and improvements (34.3%). Other significant values include access to safe open space, parks, and trails (36.2%), housing for all people (27.9%), and stable and fiscally sustainable city operations (22.3%). On the other hand, community improvements, such as a beautiful, clean, green, and litter-free city, were less prioritized, with only 16.8% of respondents emphasizing this value.



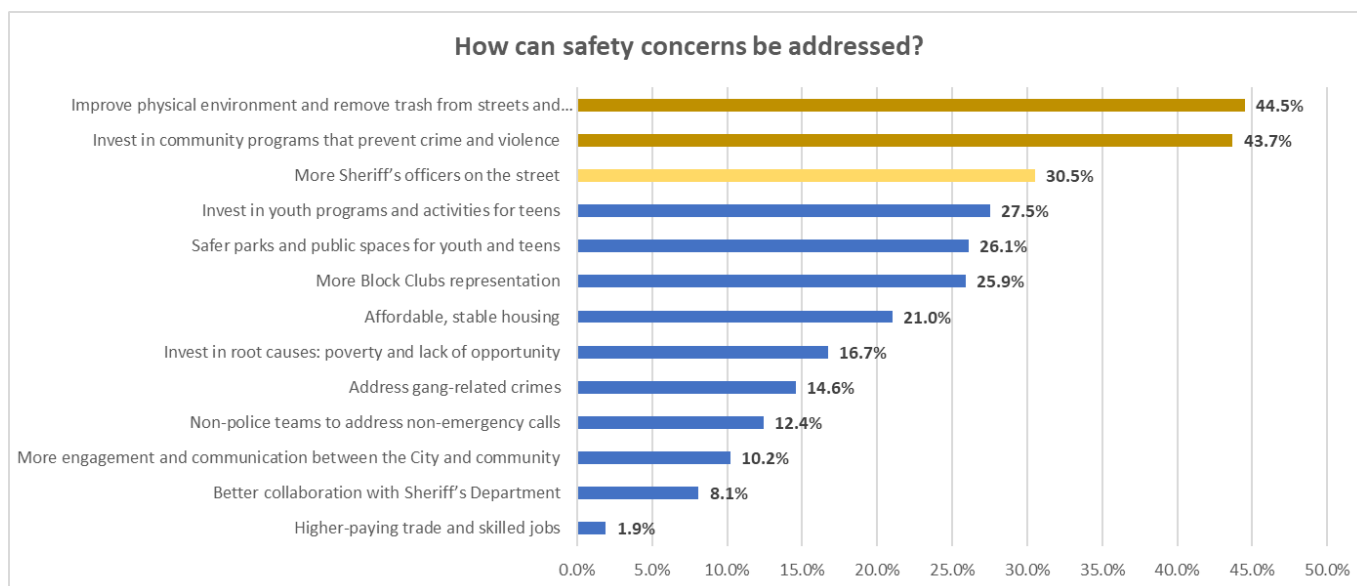
### Question 3: What are your primary personal safety concerns?

The survey results indicate that property crime is a significant concern among the respondents, with 37.5% expressing worry about this issue. Other prominent concerns include code violations, abandoned cars, graffiti, weeds, and/or illegal dumping (32.4%), gang violence (32.4%), and lack of healthcare access (30.8%). Many respondents also highlighted their economic insecurity (26.3%) and the proximity to toxic pollutants and industrial uses (26.3%) as areas of concern. In addition, the inability to pay rent or the risk of becoming homeless (27.9%) and extreme heat conditions (26.5%) were also key worries. Conversely, issues like unsafe driving speeds and street takeovers (24.4%) and broken streetlights/dark streets (12.9%) were of relatively lower concern among the participants.



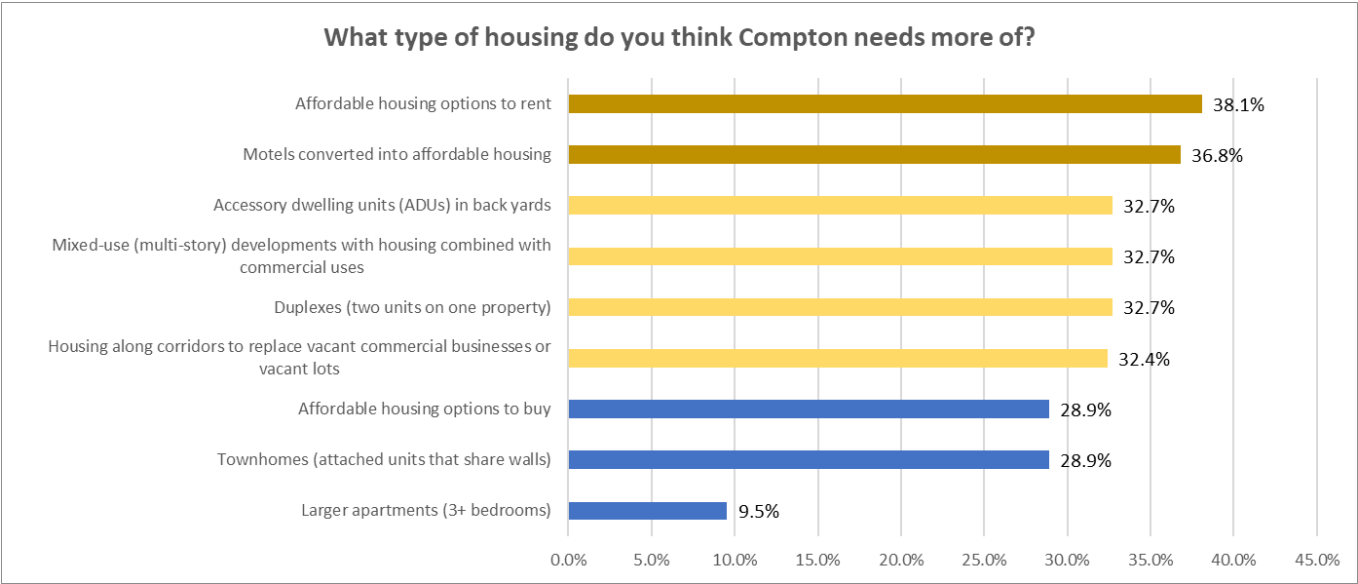
#### Question 4: How can safety concerns be addressed?

The survey results highlight the strong community desire for proactive measures aimed at improving safety and addressing crime. A significant portion of respondents, 44.5%, emphasized the need to improve the physical environment by removing trash from streets and businesses. Similarly, 43.7% advocated for investment in community programs that prevent crime and violence, showing a commitment to addressing root causes. Affordable, stable housing (21.0%) and investment in youth programs and activities for teens (27.5%) were also recognized as important steps. Furthermore, there was a demand for safer parks and public spaces for youth and teens (26.1%), and more representation through Block Clubs (25.9%). Meanwhile, addressing gang-related crimes (14.6%) and ensuring more Sheriff's officers on the street (30.5%) were areas of concern, along with the desire for better engagement and communication between the City and the community (10.2%) between the City and the community (10.2%).



**Question 5: What type of housing do you think Compton needs more of??**

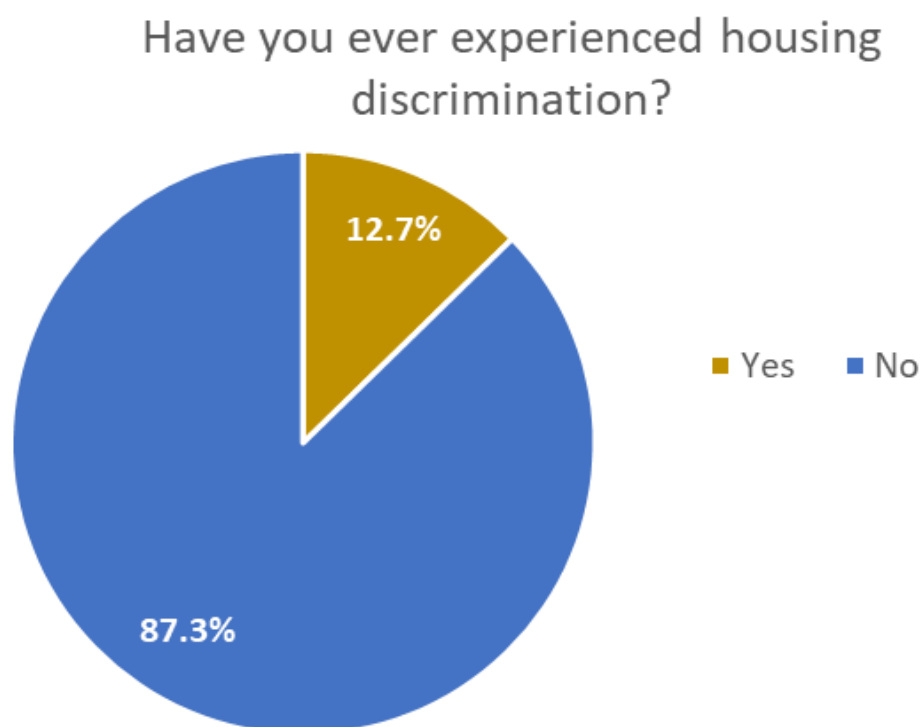
The survey results indicate a clear desire for diverse affordable housing options. Affordable housing options to rent (38.1%) emerged as the top priority, followed closely by motels converted into affordable housing (36.8%). Respondents expressed interest in flexible housing solutions, with accessory dwelling units (ADUs) in backyards (32.7%) and duplexes (32.7%) as favorable options. Similarly, mixed-use developments combining housing with commercial uses (32.7%) and housing along corridors to replace vacant commercial businesses or vacant lots (32.4%) were favored as strategies to address housing needs. Moreover, there was demand for affordable housing options for purchase (28.9%) and townhomes (28.9%). The survey results emphasize the importance of a well-rounded approach to affordable housing solutions.





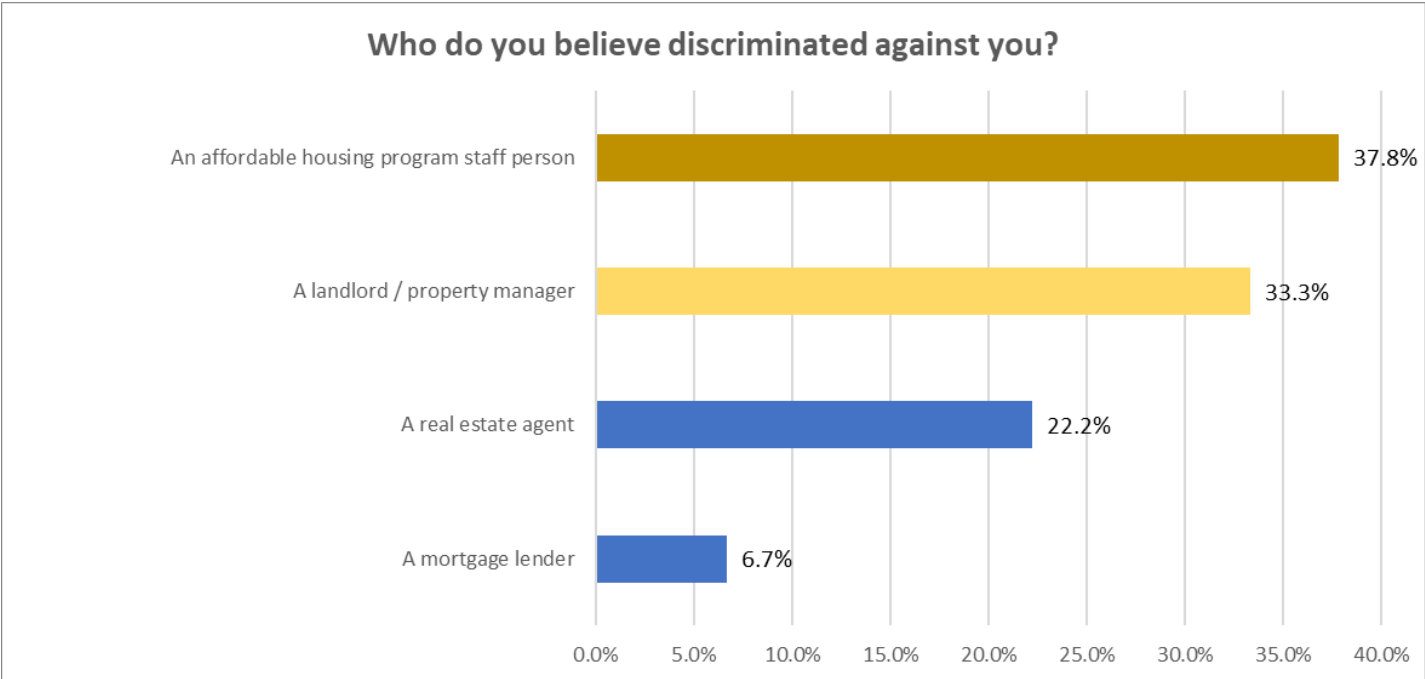
### Question 6: Have you ever experienced housing discrimination?

The survey results reveal that a majority of respondents, specifically 87.3 percent, did not report experiencing housing discrimination in Compton, highlighting a generally positive perception of the local housing environment. In contrast, only 12.7 percent of participants indicated that they had encountered housing discrimination. These findings underscore the importance of ongoing efforts to promote fair and equitable housing practices in Compton.



**Question 7: Have you ever experienced housing discrimination?**

Among respondents who reported experiencing housing discrimination in Compton, the survey results reveal the diverse sources of support they sought. A substantial 37.8 percent of those affected reached out to staff from affordable housing programs, highlighting the importance of these programs in addressing housing discrimination issues. Additionally, 33.3 percent sought assistance from landlords or property managers, indicating a significant role for these entities in addressing and resolving such concerns. Real estate agents were approached by 22.2 percent of those affected, emphasizing their involvement in helping navigate housing discrimination matters. A smaller proportion, at 6.7 percent, turned to mortgage lenders for support, indicating that such lenders were less commonly sought out by individuals facing housing discrimination challenges.

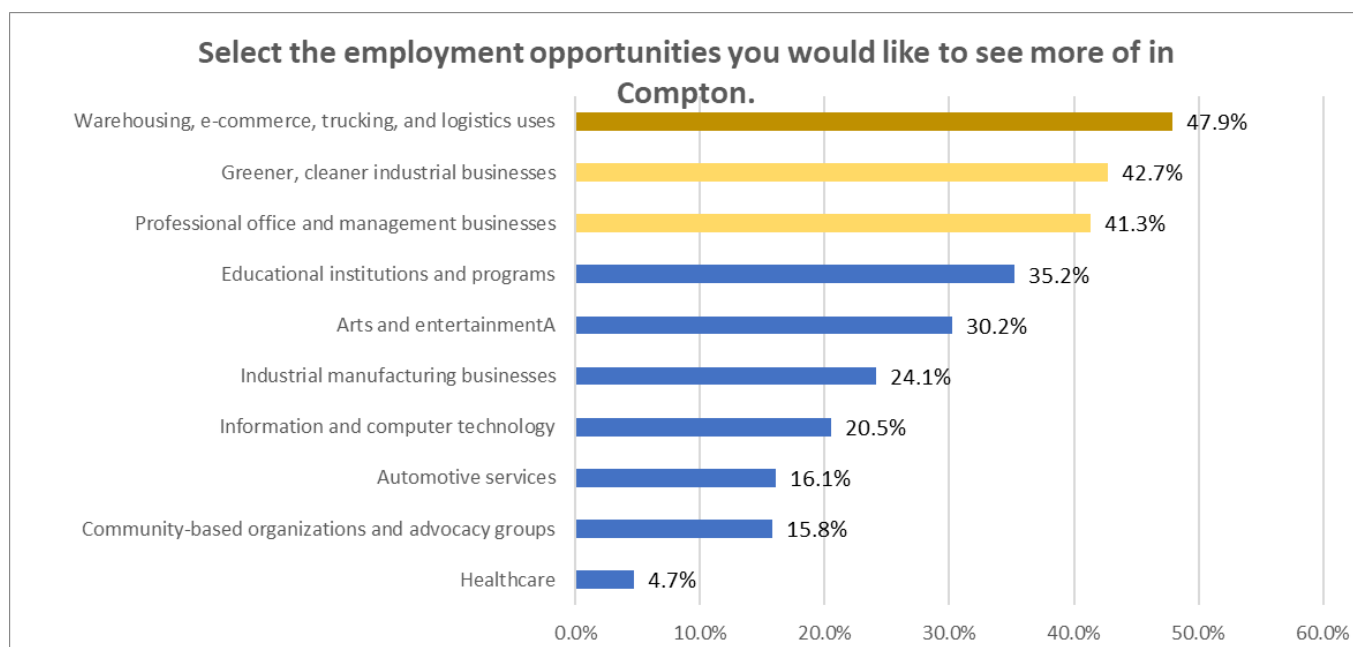


### Question 8: Select the employment opportunities you would like to see more of in Compton.

The survey results provide insights into the types of jobs and industries that respondents in Compton are interested in pursuing.

Warehousing, e-commerce, trucking, and logistics uses emerged as the most popular choice, with 47.9 percent of respondents expressing interest in this field. Greener, cleaner industrial businesses followed closely, with 42.7 percent showing a preference for such roles. Professional office and management businesses were favored by 41.3 percent of respondents, highlighting a desire for white-collar employment. Educational institutions and programs were appealing to 35.2 percent, indicating a demand for opportunities in academia.

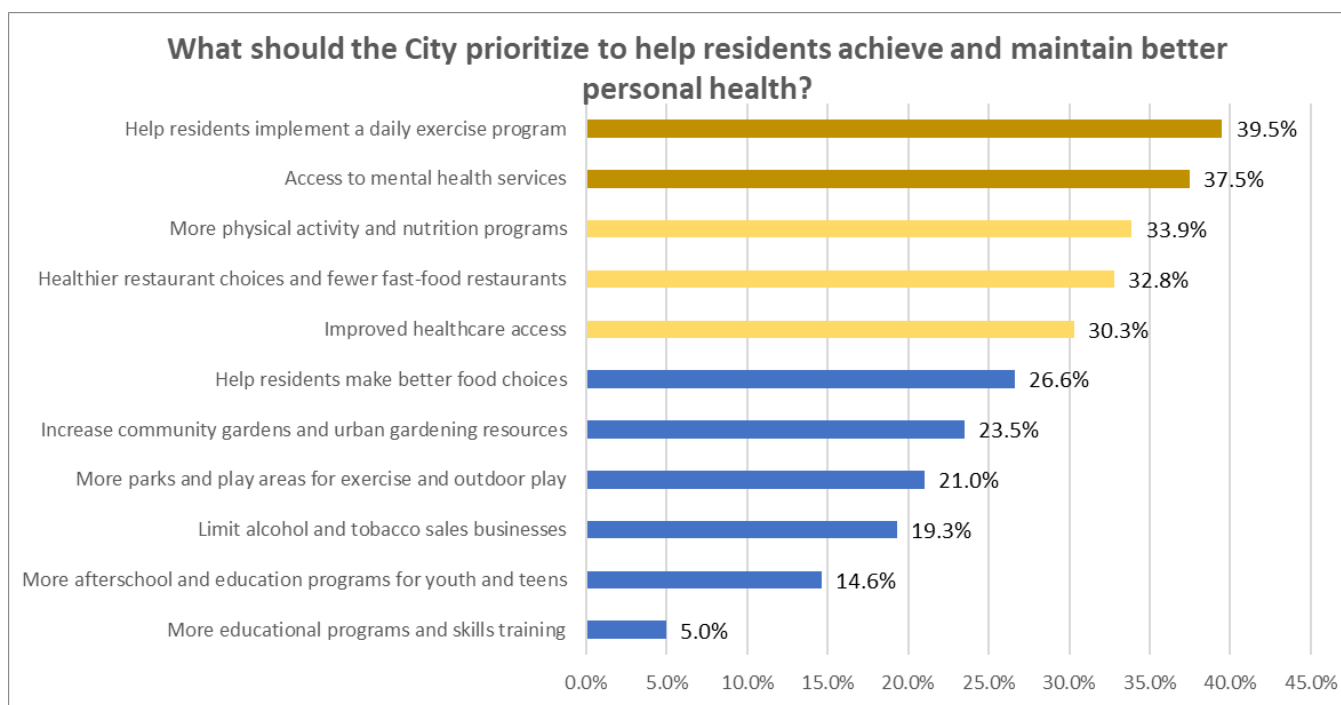
Arts and entertainment garnered interest from 30.2 percent, while industrial manufacturing businesses and information technology roles were also well-received, with 24.1 percent and 20.5 percent of respondents, respectively. Automotive services and community-based organizations saw 16.1 percent and 15.8 percent of interest, while healthcare was the least favored, with only 4.7 percent of respondents indicating a preference for roles in this sector.



### Question 9: What should the City prioritize to help residents achieve and maintain better personal health?

The survey results reveal a strong interest in promoting healthier lifestyles and improving access to various health-related services in Compton. The highest-ranked priority, with 39.5 percent of respondents, was helping residents implement a daily exercise program, indicating a community focus on physical fitness. Access to mental health services followed closely, with 37.5 percent of respondents recognizing the importance of addressing mental well-being. More physical activity and nutrition programs, at 33.9 percent, were favored for promoting overall health. Healthier restaurant choices and reducing fast-food options were the preference of 32.8 percent, reflecting a desire for better dietary options.

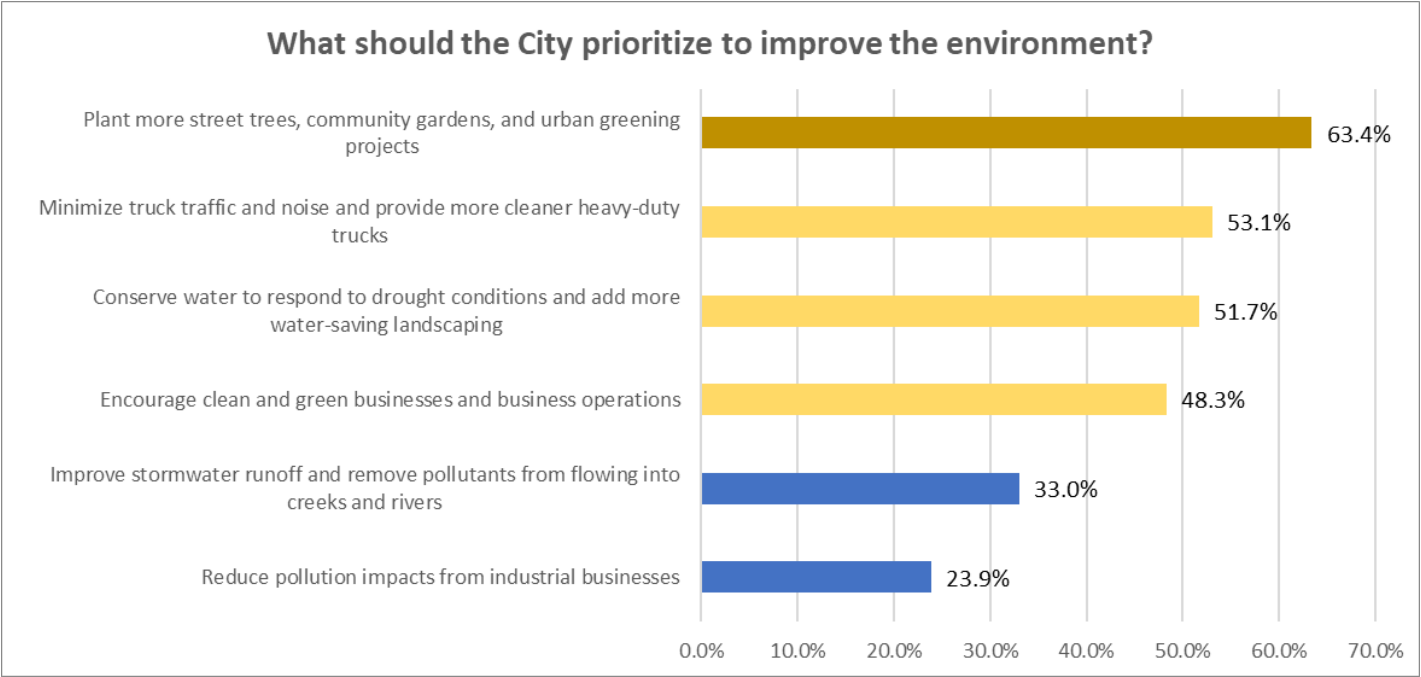
Improved healthcare access resonated with 30.3 percent of respondents, emphasizing the need for accessible medical services. Encouraging residents to make better food choices and increasing community gardens and urban gardening resources were popular choices at 26.6 percent and 23.5 percent, respectively. The community also expressed a desire for more parks and play areas, with 21.0 percent favoring outdoor exercise spaces. Furthermore, 19.3 percent sought limitations on alcohol and tobacco sales businesses, and 14.6 percent desired additional afterschool and education programs for youth and teens, emphasizing the importance of youth development and healthy living practices.



**Question10: What should the City prioritize to improve the environment?**

The survey results reflect a strong community focus on environmental preservation and sustainability in Compton. Approximately 63.4 percent of respondents expressed a strong interest in initiatives related to planting more street trees, creating community gardens, and promoting urban greening projects, demonstrating a commitment to enhancing the city's green spaces and overall environmental quality. Additionally, 53.1 percent emphasized the need to minimize truck traffic and noise while increasing the use of cleaner heavy-duty trucks, indicating concerns about air quality and traffic-related nuisances. Water conservation and water-saving landscaping garnered support from 51.7 percent, revealing a community-wide dedication to responsible water resource management, especially in response to drought conditions.

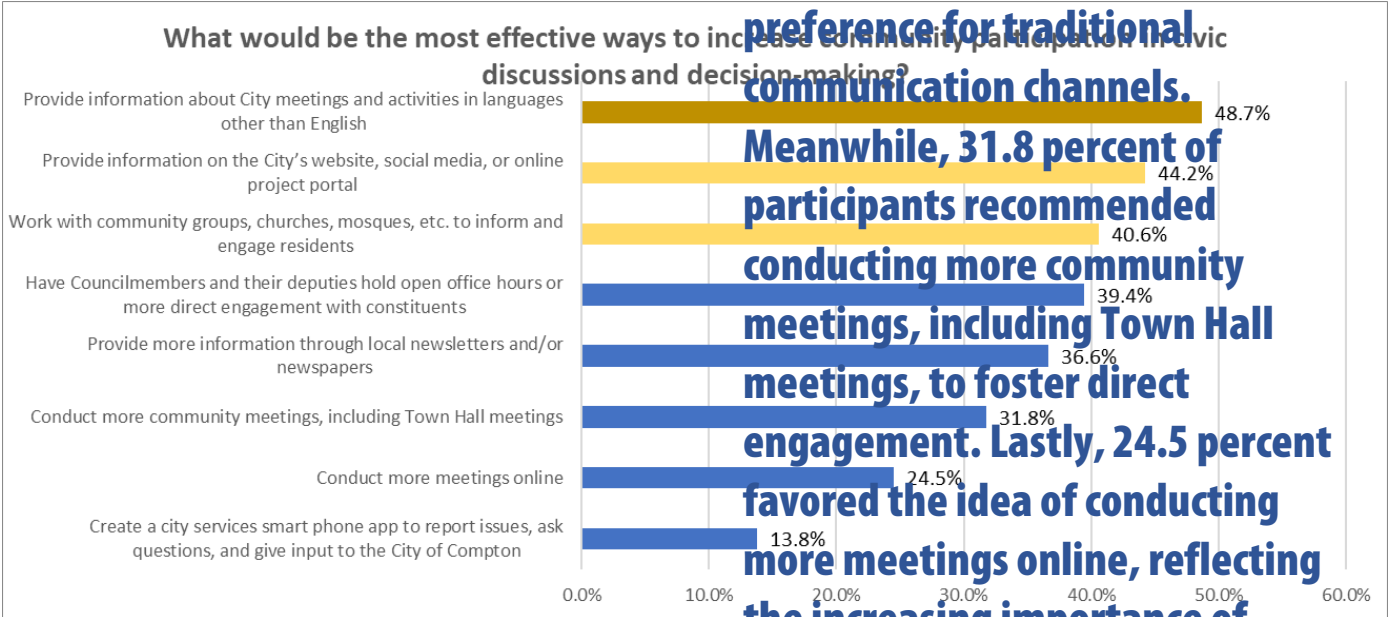
Encouraging clean and green businesses and operations found favor with 48.3 percent of respondents, illustrating a desire for more eco-friendly practices within the local business sector. Furthermore, 33.0 percent of respondents sought improvements in managing stormwater runoff and reducing pollutants in local creeks and rivers, underscoring their concern for water quality and environmental health. Lastly, 23.9 percent aimed to reduce pollution impacts from industrial businesses, signaling a collective aspiration for a cleaner and more sustainable urban environment.



**Question 11: What would be the most effective ways to increase community participation in civic discussions and decision-making?**

The survey results highlight a community desire for improved communication and engagement with the City of Compton. An overwhelming 48.7 percent of respondents expressed the need for information about City meetings and activities in languages other than English, emphasizing inclusivity and linguistic diversity. Additionally, 44.2 percent emphasized the importance of providing information through the City's website, social media, or online project portal, demonstrating the significance of accessible digital platforms for communication. Engaging residents through community groups, churches, mosques, and similar organizations was favored by 40.6 percent, indicating a preference for community-based engagement approaches.

**Moreover, 39.4 percent called for Councilmembers and their deputies to hold open office hours or engage more directly with constituents, strengthening the link between elected officials and the community. Offering information through local newsletters and newspapers resonated with 36.6 percent of respondents, showing a preference for traditional communication channels. Meanwhile, 31.8 percent of participants recommended conducting more community meetings, including Town Hall meetings, to foster direct engagement. Lastly, 24.5 percent favored the idea of conducting more meetings online, reflecting the increasing importance of virtual engagement methods.**



## **Appendix A:**

English Survey

Spanish Survey



## Vision for Compton Survey: Share Your Ideas

---

### **The City of Compton is updating its General Plan.**

The General Plan establishes the framework for making decisions about new housing, businesses, community programs, and places to shop and dine. The General Plan defines a 20-year vision. **Community input provides the foundation for a successful General Plan.**

Through this survey, the City will hear from the community about the most important issues to address. Your ideas are key as we *Build a Better Compton*.

**Thank you for your contribution!**

---

**Fill this survey out online:**



For more information, visit:  
**[www.Compton2045.org](http://www.Compton2045.org)**



# Ideas for Future Success

---

## 1) What key issues should the City address over the next 20 years? Please select your top five (5).

- ☐ Provide basic services such as clean streets and sidewalks, drivable streets, flat safe sidewalks, street signs, working streetlights and street landscaping
- ☐ Expand recreation and community programs
- ☐ Maintain and improve streets, sidewalks, and trails along Compton Creek
- ☐ Address loitering in public places or in front of businesses
- ☐ Address street takeovers and unsafe intersections
- ☐ Reduce crime and improve public safety (safe places for families to go)
- ☐ Restore trust in government
- ☐ Maintain and improve aging public buildings and facilities
- ☐ Improve existing parks and maintain play equipment and facilities
- ☐ Address illegal dumping and trash, weeds, code violations, vehicle storage, graffiti, and other code violations
- ☐ Provide more places to shop and dine in Compton
- ☐ Encourage development of entertainment businesses (e.g., indoor playgrounds, gaming centers, bowling alleys, movie theaters)
- ☐ Create higher-paying employment opportunities
- ☐ Expand the housing supply to include more affordable housing units
- ☐ Protect neighborhoods from air pollution from industrial businesses, railroads, and freeways
- ☐ Other (please specify): \_\_\_\_\_

## 2) What community values are most important to you? Please select your top three (3).

- ☐ Safe and healthy neighborhoods and business districts
- ☐ Equitable and just of distribution of City services and improvements
- ☐ Housing for all people
- ☐ Diverse employment opportunities and higher paying jobs
- ☐ Access to safe open space, parks, and trails
- ☐ Taking actions to address climate change and community resilience
- ☐ Accessible and transparent government where the community's voice is heard
- ☐ Stable and fiscally sustainable city operations
- ☐ Community improvements: beautiful, clean, green, and litter-free city
- ☐ Other (please specify): \_\_\_\_\_

## Community Safety

---

### 3) What are your primary personal safety concerns? Please select your top three (3).

- ☐ Inability to pay rent/risk of becoming homeless
- ☐ Economic insecurity
- ☐ Property crime
- ☐ Gang violence
- ☐ Lack of healthcare access
- ☐ Extreme heat conditions
- ☐ Proximity to toxic pollutants and industrial uses
- ☐ Code violations, abandoned cars, graffiti, weeds, and/or illegal dumping
- ☐ Unsafe driving speeds and street takeovers
- ☐ Broken streetlights/dark streets
- ☐ Other (please specify) : \_\_\_\_\_

### 4) How can safety concerns be addressed? Please select your top three (3).

- ☐ Invest in root causes: poverty and lack of opportunity
  - ☐ Affordable, stable housing
  - ☐ Invest in community programs that prevent crime and violence
  - ☐ More Block Clubs representation
  - ☐ More Sheriff's officers on the street
  - ☐ Improve physical environment and remove trash from streets and businesses
  - ☐ Invest in youth programs and activities for teens
  - ☐ Safer parks and public spaces for youth and teens
  - ☐ Address gang-related crimes
  - ☐ Non-police teams to address non-emergency calls
  - ☐ Better collaboration with Sheriff's Department
  - ☐ More engagement and communication between the City and community
  - ☐ Higher-paying trade and skilled jobs
  - ☐ Other (please specify) : \_\_\_\_\_
-

# Housing

---

**5) What type of housing do you think Compton needs more of? Please select your top three (3).**

- ☐ Affordable housing options to buy
- ☐ Affordable housing options to rent
- ☐ Motels converted into affordable housing
- ☐ Accessory dwelling units (ADUs) in back yards
- ☐ Duplexes (two units on one property)
- ☐ Townhomes (attached units that share walls)
- ☐ Mixed-use (multi-story) developments with housing combined with commercial uses
- ☐ Housing along corridors to replace vacant commercial businesses or vacant lots
- ☐ Larger apartments (3+ bedrooms)
- ☐ Other (please specify) : \_\_\_\_\_

**6) Indicate the importance of each of these housing challenges in Compton.**

	<b>Very Important</b>	<b>Somewhat Important</b>	<b>Not Important</b>	<b>Don't Know</b>
<b>Increase the supply of housing</b> , including building more affordable housing units	( )	( )	( )	( )
<b>Support programs to help homeowners</b> at risk of mortgage default to keep their homes, including mortgage loan programs	( )	( )	( )	( )
<b>Support down payment assistance</b> programs to help families or individuals purchase a home in Compton	( )	( )	( )	( )
<b>Streamline the City development process</b> for new housing construction	( )	( )	( )	( )
Establish housing specifically <b>designed for seniors, large families, veterans, and/or persons with disabilities</b>	( )	( )	( )	( )
<b>Promote public awareness of federal, State, and local regulations regarding equal access to housing</b>	( )	( )	( )	( )
<b>Remove housing inside industrial districts</b>	( )	( )	( )	( )
<b>Encourage the rehabilitation of existing housing</b> in residential subdivisions	( )	( )	( )	( )
<b>Provide shelters and transitional housing for homeless families and individuals</b> , together along with services that help move people into permanent housing	( )	( )	( )	( )
<b>Provide incentives to housing developers</b> to build more affordable housing in the city	( )	( )	( )	( )

**7) Have you ever experienced housing discrimination?**

☐ Yes    ☐ No

**8) Who do you believe discriminated against you?**

- ☐ A landlord / property manager  
☐ A real estate agent  
☐ An affordable housing program staff person  
☐ A mortgage lender  
☐ Other : \_\_\_\_\_

**9) On what basis do you believe you were discriminated against?**

- ☐ Race  
☐ Color  
☐ Religion  
☐ National Origin  
☐ Ancestry  
☐ Gender  
☐ Marital Status  
☐ Sexual Orientation  
☐ Age  
☐ Family Status (e.g., single parent with children, family with children or expecting a child)  
☐ Source of Income (e.g., welfare, unemployment, disability, social security)  
☐ Disability (e.g., either you or someone living with you)  
☐ Other: \_\_\_\_\_

## Businesses

**10) Please indicate the importance of establishing the following types of new businesses in Compton:**

	<b>Very Important</b>	<b>Somewhat Important</b>	<b>Not Important</b>	<b>Don't Know</b>
Sit-down restaurants	( )	( )	( )	( )
Chain restaurants and fast casual restaurants	( )	( )	( )	( )
Cafes, coffee shops, and bakeries	( )	( )	( )	( )
Healthier food outlets and restaurants	( )	( )	( )	( )
Larger grocery stores and supermarkets	( )	( )	( )	( )
Entertainment and recreational venues (e.g., indoor playgrounds, gaming centers, bowling alleys, movie theaters)	( )	( )	( )	( )
Larger commercial retail stores and services	( )	( )	( )	( )
Locally owned, small retail stores and services	( )	( )	( )	( )
Other: _____	( )	( )	( )	( )

**11) Select the employment opportunities you would like to see more of in Compton.  
Please select your top three (3).**

- ☐ Information and computer technology
- ☐ Industrial manufacturing businesses
- ☐ Professional office and management businesses
- ☐ Warehousing, e-commerce, trucking, and logistics uses
- ☐ Greener, cleaner industrial businesses
- ☐ Educational institutions and programs
- ☐ Arts and entertainment
- ☐ Automotive services
- ☐ Community-based organizations and advocacy groups
- ☐ Healthcare
- ☐ Other (please specify) : \_\_\_\_\_

## Community Health and Environment

---

**12) What should the City prioritize to help residents achieve and maintain better personal health? Please select your top three (3).**

- |  |   |
|--|---|
| <input type="checkbox"/> Help residents make better food choices           | <input type="checkbox"/> Healthier restaurant choices and fewer fast-food restaurants |
| <input type="checkbox"/> Help residents implement a daily exercise program | <input type="checkbox"/> Increase community gardens and urban gardening resources     |
| <input type="checkbox"/> More physical activity and nutrition programs     | <input type="checkbox"/> Limit alcohol and tobacco sales businesses                   |
| <input type="checkbox"/> Access to mental health services                  | <input type="checkbox"/> More parks and play areas for exercise and outdoor play      |
| <input type="checkbox"/> Improved healthcare access                        | <input type="checkbox"/> More afterschool and education programs for youth and teens  |
|  | <input type="checkbox"/> More educational programs and skills training                |
| <input type="checkbox"/> Other (please specify): _____                     |   |

**13) What should the City prioritize to improve the environment? Please select your top three (3).**

- ☐ Reduce pollution impacts from industrial businesses
- ☐ Minimize truck traffic and noise and provide more cleaner heavy-duty trucks
- ☐ Plant more street trees, community gardens, and urban greening projects
- ☐ Encourage clean and green businesses and business operations
- ☐ Conserve water to respond to drought conditions and add more water-saving landscaping
- ☐ Improve stormwater runoff and remove pollutants from flowing into creeks and rivers
- ☐ Other (please specify): \_\_\_\_\_

## Engagement in Civic Decision-making

---

**14) What would be the most effective ways to increase community participation in civic discussions and decision-making? Please select your top three (3).**

- ☐ Provide information about City meetings and activities in languages other than English
- ☐ Conduct more community meetings, including Town Hall meetings
- ☐ Conduct more meetings online
- ☐ Provide information on the City's website, social media, or online project portal
- ☐ Provide more information through local newsletters and/or newspapers
- ☐ Work with community groups, churches, mosques, etc. to inform and engage residents
- ☐ Have Councilmembers and their deputies hold open office hours or more direct engagement with constituents
- ☐ Create a city services smart phone app to report issues, ask questions, and give input to the City of Compton
- ☐ Other (please specify): \_\_\_\_\_

## About You

---

**Tell us about yourself. This information will not be used for any purpose other than analyzing survey results.**

**15) What is your relationship to Compton?**

- ☐ Resident  
☐ Employee  
☐ Visitor  
☐ Other (please describe): \_\_\_\_\_

**16) How old are you?**

- ☐ Under 18 years      ☐ 45 to 54 years  
☐ 18 to 24 years      ☐ 55 to 64 years  
☐ 25 to 34 years      ☐ 65 year and over  
☐ 35 to 44 years      ☐ Prefer not to say

**17) How many children under the age of 18 live in your household?**

- ☐ None      ☐ 3  
☐ 1      ☐ 4  
☐ 2      ☐ 5+

**18) How do you identify yourself? Select all that apply.**

- ☐ Hispanic/Latino  
☐ African American/Black  
☐ White non-Hispanic  
☐ Asian or Asian American  
☐ Native Hawaiian or Pacific Islander  
☐ Prefer not to say  
☐ Other (please describe): \_\_\_\_\_



**19) Please indicate your gender.**

- ☐ Male
- ☐ Female
- ☐ Non-binary
- ☐ Prefer not to say

**20) Please indicate your household income.**

- ☐ Under \$15,000
- ☐ \$15,000 - \$24,999
- ☐ \$25,000 - \$49,999
- ☐ \$50,000 - \$74,999
- ☐ \$75,000 - \$99,999
- ☐ \$100,000 - \$149,999
- ☐ \$150,000 - \$199,999
- ☐ \$200,000 or more
- ☐ Prefer not to say

## **Thank You!**

---

**Thank you for your contribution to the Compton General Plan 2045!**



# Encuesta de su Visión para Compton: Comparta Sus Ideas

---

## La ciudad de Compton está actualizando su Plan General.

El Plan General establece una guía para tomar decisiones sobre nuevas viviendas, negocios, programas y lugares para comprar y cenar. El Plan General define una visión de 20 años. **El aporte de la comunidad proporciona la base para un Plan General exitoso.**

A través de esta encuesta, la Ciudad escuchará de la comunidad sobre los asuntos más importantes. Sus ideas son clave para *Construir un Compton mejor.*

**¡Gracias por su contribución!**

---

**Llene esta encuesta en línea:**



Para mas información, visite:  
**[www.Compton2045.org](http://www.Compton2045.org)**

# Ideas Para un Futuro Exitoso

---

## 1) ¿En cuales asuntos se debería de enfocar la ciudad en los próximos 20 años? Por favor, seleccione sus cinco (5) prioridades.

- ☐ Proporcionar servicios básicos como calles y aceras limpias, calles transitables, aceras planas y seguras, letreros de calles, farolas en funcionamiento y paisajismo de calles
- ☐ Expandir los programas recreativos y comunitarios
- ☐ Mantener y mejorar las calles, aceras y senderos a lo largo de Compton Creek
- ☐ Enfrentar el merodeo en lugares públicos o enfrente de negocios
- ☐ Enfrentar carreras en las calles e intersecciones inseguras
- ☐ Reducir el crimen y mejorar la seguridad pública (lugares seguros para familias)
- ☐ Restaurar la confianza en el gobierno
- ☐ Mantener y mejorar edificios e instalaciones públicas envejecidas
- ☐ Mejorar los parques actuales y mantener el equipo de juego y las instalaciones
- ☐ Enfrentar el vertido ilegal y basura, las malezas, violaciones de código, el almacenamiento de vehículos, el grafiti y otras violaciones de código
- ☐ Proporcionar más lugares para comprar y cenar en Compton
- ☐ Fomentar el desarrollo de negocios de entretenimiento (por ejemplo, patios de recreo cubiertos, centros de juego, boleras, cines)
- ☐ Crear oportunidades de empleo mejor pagado
- ☐ Expandir el abastecimiento de viviendas para incluir unidades de viviendas más accesibles
- ☐ Proteger los vecindarios de la contaminación del aire de negocios industriales, ferrocarriles y autopistas
- ☐ Otro (por favor especifique): \_\_\_\_\_

## 2) ¿Qué valores comunitarios son más importantes para usted? Por favor, seleccione sus tres (3) prioridades.

- ☐ Vecindarios y distritos comerciales seguros y saludables
- ☐ Distribución equitativa y justa de los servicios y mejoramiento de la ciudad
- ☐ Vivienda para todas personas
- ☐ Diversas oportunidades de empleo y empleos mejor pagados
- ☐ Acceso a espacios abiertos, parques y senderos seguros
- ☐ Tomar medidas para enfrentar el cambio climático y la resiliencia de la comunidad
- ☐ Gobierno accesible y transparente donde se escuche la voz de la comunidad
- ☐ Operaciones de la ciudad estables y fiscalmente sostenibles
- ☐ Mejoramiento en la comunidad: una ciudad bella, limpia, verde y libre de basura
- ☐ Otro (por favor especifique): \_\_\_\_\_

## Seguridad de la Comunidad

---

### 3) ¿Cuáles son sus preocupaciones principales de seguridad personal? Por favor, seleccione sus tres (3) prioridades.

- ☐ Inhabilidad para pagar la renta / riesgo de quedarse sin hogar
- ☐ Inseguridad económica
- ☐ Delitos contra la propiedad
- ☐ Violencia de pandillas
- ☐ Falta de acceso a atención médica
- ☐ Condiciones de calor extremo
- ☐ Proximidad a contaminantes tóxicos y usos industriales
- ☐ Violaciones del código, autos abandonados, grafiti, malezas y / o vertidos ilegales
- ☐ Velocidades de conducción inseguras y carreras ilegales
- ☐ Farolas dañadas/calles oscuras
- ☐ Otro (por favor especifique) : \_\_\_\_\_

### 4) ¿Cómo se pueden enfrentar las preocupaciones de seguridad? Por favor, seleccione sus tres (3) prioridades.

- ☐ Invertir en las causas profundas: pobreza y falta de oportunidades
- ☐ Vivienda accesible y estable
- ☐ Invertir en programas comunitarios que previenen el crimen y la violencia
- ☐ Más representación de Block Clubs/ grupos comunitarios
- ☐ Más oficiales del sheriff en la calle
- ☐ Mejorar el entorno físico y eliminar la basura de las calles y negocios
- ☐ Invertir en programas y actividades juveniles para adolescentes
- ☐ Parques y espacios públicos más seguros para jóvenes y adolescentes
- ☐ Abordar los delitos relacionados con pandillas
- ☐ Equipos no policiales para atender llamadas que no sean de emergencia
- ☐ Mejorar la colaboración con el departamento del Sheriff
- ☐ Más compromiso y comunicación entre la ciudad y la comunidad
- ☐ Empleos calificados y comerciales mejor pagados
- ☐ Otro (por favor especifique) : \_\_\_\_\_

## Vivienda

---

5) ¿Qué tipo de vivienda cree que Compton necesita más? Por favor, seleccione sus tres (3) prioridades.

- ☐ Opciones de vivienda accesibles para comprar
- ☐ Opciones de vivienda accesibles para rentar
- ☐ Moteles convertidos en viviendas accesibles
- ☐ Unidades de vivienda adicionales ("ADU") en patios traseros
- ☐ Dúplex (dos unidades en una propiedad)
- ☐ Casas conectadas (unidades adjuntas que comparten paredes)
- ☐ Desarrollos de uso mixto (varios pisos) con viviendas combinadas con usos comerciales
- ☐ Viviendas a lo largo de corredores para reemplazar negocios comerciales vacantes o lotes vacíos
- ☐ Apartamentos más grandes (3+ habitaciones)
- ☐ Otro (por favor especifique) : \_\_\_\_\_

**6) Indique la importancia de cada uno de estos desafíos de vivienda en Compton.**

	<b>Muy important e</b>	<b>Algo Important e</b>	<b>No es important e</b>	<b>No sé</b>
<b>Aumentar la fuente de viviendas,</b> incluyendo la construcción de unidades de viviendas más accesibles	( )	( )	( )	( )
<b>Apoyar programas para ayudar a los propietarios de viviendas</b> en riesgo de incumplimiento hipotecario a conservar sus hogares, incluyendo los programas de préstamos hipotecarios	( )	( )	( )	( )
<b>Apoyar los programas de asistencia para el pago inicial</b> para ayudar a las familias o individuos comprar una casa en Compton	( )	( )	( )	( )
<b>Agilizar el proceso de desarrollo de la Ciudad</b> para la construcción de nuevas viviendas	( )	( )	( )	( )
Establecer viviendas <b>diseñadas</b> específicamente <b>para personas mayores, familias numerosas, veteranos y / o personas con discapacidades</b>	( )	( )	( )	( )
<b>Promover la conciencia pública sobre las regulaciones federales, estatales y locales con respecto a la igualdad de acceso a la vivienda</b>	( )	( )	( )	( )
<b>Eliminar las viviendas dentro de los distritos industriales</b>	( )	( )	( )	( )
<b>Fomentar la rehabilitación de viviendas actuales</b> en fraccionamientos residenciales	( )	( )	( )	( )
<b>Proporcionar refugios y viviendas de transición para familias e individuos sin hogar</b> , junto con servicios que ayuden a trasladar a las personas a viviendas permanentes	( )	( )	( )	( )
<b>Proporcionar incentivos a los desarrolladores de viviendas</b> para construir viviendas más accesibles en la ciudad	( )	( )	( )	( )

**7) ¿Alguna vez ha vivido discriminación de vivienda?**

☐ Si    ☐ No

**8) ¿Quién cree que lo discriminó?**

- ☐ Un propietario / administrador de la propiedad
- ☐ Un agente inmobiliario
- ☐ Un miembro del personal del programa de vivienda accesible
- ☐ Un prestamista hipotecario
- ☐ Otro: \_\_\_\_\_

**9) ¿A qué base cree que fue discriminado?**

- |  |  |
|--|--|
| <input type="checkbox"/> Raza            | <input type="checkbox"/> Estado civil  |
| <input type="checkbox"/> Color           | <input type="checkbox"/> Orientación sexual  |
| <input type="checkbox"/> Religión        | <input type="checkbox"/> Edad  |
| <input type="checkbox"/> Origen Nacional | <input type="checkbox"/> Estado familiar (por ejemplo, padre soltero con hijos, familia con hijos o esperando un hijo) |
| <input type="checkbox"/> Ascendencia     | <input type="checkbox"/> Fuente de ingresos (por ejemplo, asistencia welfare, desempleo, discapacidad, seguro social)  |
| <input type="checkbox"/> Género          | <input type="checkbox"/> Discapacidad (por ejemplo, usted o alguien que vive con usted)                                |
| <input type="checkbox"/> Otro: _____     |  |

## Comercio

**10) Por favor, indique la importancia de establecer los siguientes tipos de nuevos negocios en Compton:**

	Muy important e	Algo Important e	No es important e	No sé
Restaurantes donde se puede sentar	( )	( )	( )	( )
Cadenas de restaurantes y restaurantes casuales rápidos	( )	( )	( )	( )
Cafés, cafeterías y panaderías	( )	( )	( )	( )
Establecimientos y restaurantes de comida más saludables	( )	( )	( )	( )
Tiendas grandes de comestibles y supermercados	( )	( )	( )	( )
Lugares de entretenimiento y recreativos (por ejemplo, patios de recreo cubiertos, centros de juego, boleras, cines)	( )	( )	( )	( )
Tiendas y servicios minoristas comerciales más grandes	( )	( )	( )	( )
Pequeñas tiendas y servicios de propiedad local	( )	( )	( )	( )

**11) Seleccione las oportunidades de empleo que le gustaría ver más en Compton. Por favor, seleccione sus tres (3) prioridades.**

- ☐ Información y tecnología informática
- ☐ Empresas de fabricación industrial
- ☐ Despachos profesionales y empresas de gestión
- ☐ Usos de almacenamiento, comercio electrónico, transporte por carretera y logística
- ☐ Empresas industriales más ecológicas y limpias

- ☐ Instituciones y programas educativos
- ☐ Artes y entretenimiento
- ☐ Servicios automotrices
- ☐ Organizaciones comunitarias y grupos de defensa
- ☐ Salud

☐ Otro (por favor especifique) :



## Salud Comunitaria y Medio Ambiente

---

**12) ¿Qué debe priorizar la Ciudad para ayudar a los residentes lograr y mantener mejor salud personal? Por favor, seleccione sus tres (3) prioridades.**

- |   |  |
|---|--|
| <input type="checkbox"/> Ayudar la comunidad a elegir mejores alimentos                         | <input type="checkbox"/> Opciones de restaurantes más saludables y menos restaurantes de comida rápida |
| <input type="checkbox"/> Ayudar a los residentes a implementar un programa diario de ejercicios | <input type="checkbox"/> Aumentar los jardines comunitarios y los recursos de jardinería urbana        |
| <input type="checkbox"/> Más actividad física y programas de nutrición                          | <input type="checkbox"/> Limitar los negocios y ventas de alcohol y tabaco                             |
| <input type="checkbox"/> Acceso a los servicios de salud mental                                 | <input type="checkbox"/> Más parques y áreas de juego para hacer ejercicio y jugar al aire libre       |
| <input type="checkbox"/> Mejorar el acceso a la atención médica                                 | <input type="checkbox"/> Más programas extracurriculares y educativos para jóvenes y adolescentes      |
|   | <input type="checkbox"/> Más programas educativos y capacitación en habilidades                        |

☐ Otro (por favor especifique): \_\_\_\_\_

**13) ¿Qué debería priorizar la ciudad para mejorar el medio ambiente? Por favor, seleccione sus tres (3) prioridades.**

- ☐ Reducir los impactos de contaminación de las empresas industriales
- ☐ Minimice el tráfico y el ruido de los camiones y proporcione camiones pesados más limpios
- ☐ Sembrar más árboles en las calles, jardines comunitarios y proyectos de ecologización urbana
- ☐ Fomentar negocios y operaciones comerciales limpios y ecológicos
- ☐ Conservar el agua para responder a las condiciones de sequía y agregar más paisajismo que ahorre agua
- ☐ Mejorar el escurrimiento de aguas pluviales y eliminar los contaminantes que fluyen hacia los arroyos y ríos
- ☐ Otro (por favor especifique) : \_\_\_\_\_

## Participación en la Toma de Decisiones Cívicas

---

**14) ¿Cuáles serían las formas más efectivas de aumentar la participación de la comunidad en las discusiones cívicas y la toma de decisiones? Por favor, seleccione sus tres (3) prioridades.**

- ☐ Proporcionar información sobre reuniones y actividades de la ciudad en idiomas distintos al inglés

- ☐ Llevar a cabo más reuniones comunitarias, incluso reuniones en la municipalidad
- ☐ Llevar a cabo más reuniones en línea
- ☐ Proporcionar información en el sitio web de la ciudad, las redes sociales o el portal del proyecto en línea
- ☐ Proporcionar más información a través de boletines informativos y / o periódicos locales
- ☐ Trabajar con grupos comunitarios, iglesias, mezquitas, etc. para informar e involucrar a los residentes
- ☐ Hacer que los miembros del Consejo y sus adjuntos tengan horas de oficina abiertas o un compromiso más directo con los constituyentes
- ☐ Crear una aplicación de teléfono inteligente de servicios de la ciudad para reportar problemas, hacer preguntas y dar su opinión a la Ciudad de Compton
- ☐ Otro (por favor especifique) : \_\_\_\_\_

## Acerca de Usted

---

**Cuéntanos sobre usted. Esta información no se utilizará para ningún otro propósito que no sea analizar los resultados de la encuesta.**

### 15) ¿Cuál es su relación con Compton?

- ☐ Residente
- ☐ Empleado
- ☐ Visitante

☐ Otro (por favor describa): \_\_\_\_\_

**16) ¿Cuántos años tiene?**

- |   |  |
|---|--|
| <input type="checkbox"/> Menor de 18 años | <input type="checkbox"/> 45 a 54 años      |
| <input type="checkbox"/> 18 a 24 años     | <input type="checkbox"/> 55 a 64 años      |
| <input type="checkbox"/> 25 a 34 años     | <input type="checkbox"/> 65 años y más     |
| <input type="checkbox"/> 35 a 44 años     | <input type="checkbox"/> Prefiero no decir |

**17) ¿Cuántos niños menores de 18 años viven en su hogar?**

- |                                  |                             |
|----------------------------------|-----------------------------|
| <input type="checkbox"/> Ninguno | <input type="checkbox"/> 3  |
| <input type="checkbox"/> 1       | <input type="checkbox"/> 4  |
| <input type="checkbox"/> 2       | <input type="checkbox"/> 5+ |

**18) ¿Cómo se identifica? Seleccione todas las opciones que correspondan.**

- |  |  |
|--|--|
| <input type="checkbox"/> Hispano/a/ Latina/o/          | <input type="checkbox"/> Nativo de Hawái o de las Islas del Pacífico |
| <input type="checkbox"/> Afroamericano/ Negro          | <input type="checkbox"/> Prefiero no decir                           |
| <input type="checkbox"/> Blanco no Hispano             | <input type="checkbox"/> Otro (por favor describa):                  |
| <input type="checkbox"/> Asiático o Asiático-Americano | _____  |
|  | _____  |

**19) Por favor, indique su género.**

- |                                 |  |
|---------------------------------|--|
| <input type="checkbox"/> Hombre | <input type="checkbox"/> No binario        |
| <input type="checkbox"/> Mujer  | <input type="checkbox"/> Prefiero no decir |

**20) Por favor, indique los ingresos de su hogar.**

- |  |  |
|--|--|
| <input type="checkbox"/> Menos de \$15,000   | <input type="checkbox"/> \$100,000 - \$149,999 |
| <input type="checkbox"/> \$15,000 - \$24,999 | <input type="checkbox"/> \$150,000 - \$199,999 |
| <input type="checkbox"/> \$25,000 - \$49,999 | <input type="checkbox"/> \$200,000 o más       |
| <input type="checkbox"/> \$50,000 - \$74,999 | <input type="checkbox"/> Prefiero no decir     |
| <input type="checkbox"/> \$75,000 - \$99,999 |  |

**¡Gracias!**

---

**¡Gracias por su contribución al Plan General de Compton 2045!**